

# EIQ Mobility: Fleet planning made easy

Offering a trusted platform that drives fleets into a smart, electric, cost-effective future.

**30+**  
CUSTOMERS

**100,000+**  
VEHICLES

**400 million**  
MILES

## Simplify fleet electrification planning

Fleet electrification requires new complex analysis for fleet managers: are there EV models that meet their vehicle class and range requirements? What chargers are needed? Which vehicles should be electrified first? What are the operational cost and carbon emissions over the vehicle lifetime? eIQ Mobility makes it easy for fleets to get these answers fast and select the best locations for electrification with data they have readily available.

## Scale assessments within and across fleets

Whether you are a large fleet managing hundreds or thousands of vehicles, or a service provider working with many kinds of fleet customers, eIQ Mobility streamlines electrification assessments, reducing assessment planning from months to days. eIQ Mobility's flexible platform makes it easy to integrate new EV data as new models become available or as fleet routes change.

### About eIQ Mobility

eIQ Mobility, a NextEra Energy Resources Company, is the leading provider of fleet electrification advisory solutions in North America. Founded in 2018 in response to the unique roadblocks that corporate and public fleet leaders face in electrifying their fleet, eIQ Mobility uses proprietary decision software to provide data-driven insights into fleet EV feasibility. Based in San Francisco, California, the team consists of data scientists, developers, and experts in energy optimization, utilities, EV, and finance.

### About NextEra Energy Resources

NextEra Energy Resources is committed to providing energy-related products and services that grow our economy, protect the environment and support our communities. Together with its affiliated entities, NextEra Energy Resources is the world's largest generator of renewable energy from the wind and sun, a world leader in battery storage and the largest owner of distributed generation solar assets in the U.S. The company announced its entry into the mobility market with the acquisition of eIQ Mobility and a fleet electrification agreement with First Student and First Transit, North America's largest school and public transportation operators. Our success reflects the solid business practices of our parent company, NextEra Energy, Inc., a Fortune 200 company and one of the nation's leading clean energy companies.

### Our customers:



Utilities



Top  
Manufacturers



Food &  
Beverage



Governments &  
Municipalities



Schools &  
Transit



Global Parcel  
Delivery

**“It required six employees months to come up with a fleet electrification strategy that eIQ delivered in a matter of days.”**

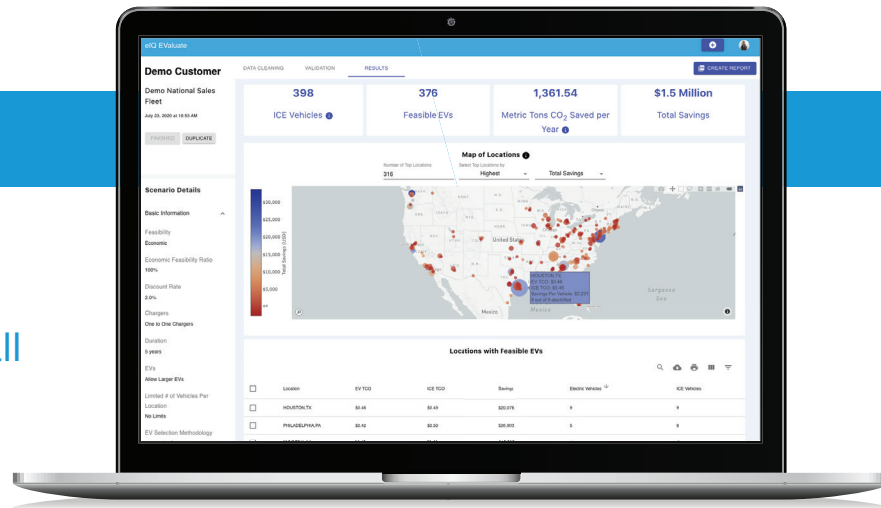
— Fleet Manager, Global Parcel Delivery

**Get in Touch!**

**Yann Kulp**, Head of Business Development  
(847) 271-2813 | Yann.Kulp@NextEraEnergy.com | eiqmobility.com

## eIQ EValuate™

Comprehensive electrification assessments for all fleet types.



### Understand

#### Current Fleet Operations

Understand critical vehicle operations of each fleet that impact electrification strategy, including:

- » Vehicle miles traveled
- » Dwell time
- » Vehicles by location, age, type
- » Fuel purchase history

### Select

#### Electric Vehicles

Identify the EVs that meet each fleet vehicle's operational requirements.

Results include:

- » Least-cost EV that meets vehicle class and climate-adjusted range requirements
- » Dynamic EV selection based on make, model, and class preferences

#### Charging Infrastructure

Identify the number and type of EV chargers required for each location.

Results include:

- » Estimated load shape by vehicle and depot for both near term and long term infrastructure upgrade and resiliency planning
- » Optimized charger selection by depot based on vehicle energy requirements, dwell time, and EV power limits

### Model

#### Economics & Sustainability

Estimate emissions and total costs of ownership between selected EVs and current ICE vehicles.

Compare:

- » Total costs of ownership (capex, maintenance, opex)
- » ICE operational carbon dioxide emissions to grid emissions from EV charging

#### Locations

Identify the least-cost feasible EVs and required chargers for each location.

Prioritize locations for:

- » Number of electrifiable vehicles
- » Optimal TCO savings
- » Greatest carbon emissions reduction

**Get in Touch!**

Yann Kulp, Head of Business Development  
(847) 271-2813 | Yann.Kulp@NextEraEnergy.com | eiqmobility.com