

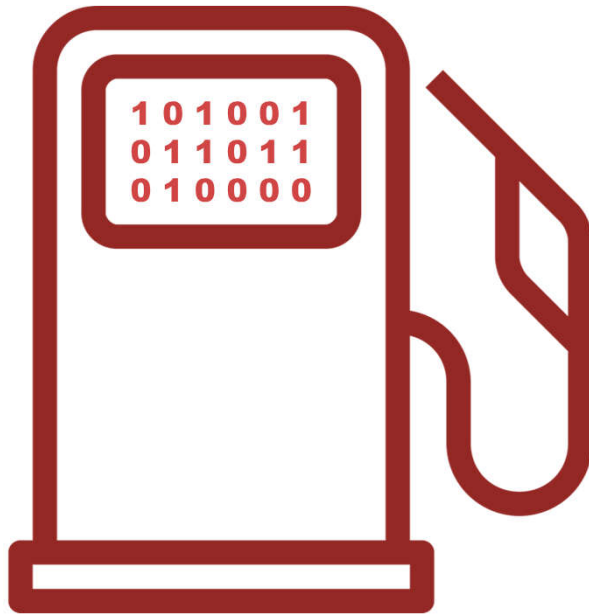
# Integrating Data Sets to Drive Fleet Efficiencies

Kurt Thearling  
VP of Analytics @ WEX



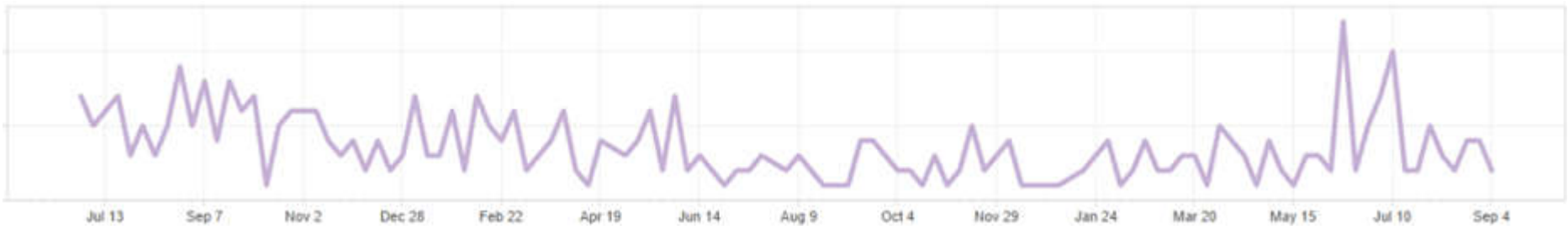
**MOBILITY SOLUTIONS FOR FLEETS.**  
CONNECTED FLEETS | AUTONOMOUS TECHNOLOGY | SHARED MOBILITY | ELECTRIC VEHICLES  
The Forager, San Jose, CA

It's all about  
layers of data

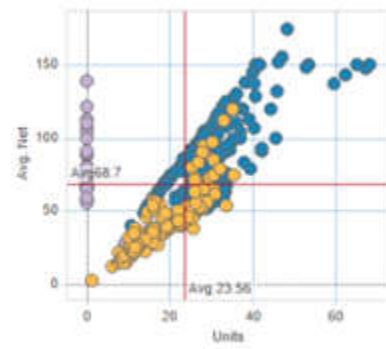


Driver	Vehicles	Gallons	\$ Gross	% Non Reg	Avg Reg Diff	Dif X Gallons
Akiko Thimmes	7	1,588	\$4,808	73.5%	+0.49	\$772.62
Lilly Seabert	3	1,682	\$4,883	76.0%	+0.29	\$486.24
Sebrina Vandyne	4	530	\$1,722	61.7%	+0.54	\$285.56
Rubi Gollman	3	411	\$1,179	100.0%	+0.46	\$189.54
Forest Blackstar	6	446	\$1,235	100.0%	+0.40	\$178.36
Elwanda Puhr	2	419	\$1,214	100.0%	+0.41	\$171.04
Florine Pinkard	1	486	\$1,427	61.4%	+0.34	\$165.28
Henriette Compos	2	399	\$1,346	96.3%	+0.41	\$165.05
Long Halnon	1	530	\$1,484	99.5%	+0.31	\$163.31
Vince Scheuren	1	377	\$1,072	70.8%	+0.41	\$153.83
Shirl Pitcavage	1	329	\$932	97.5%	+0.46	\$152.05
Santana Zisser	1	399	\$1,202	88.1%	+0.33	\$132.10
Jose Pilkington	5	284	\$885	25.1%	+0.43	\$120.55
Bryant Dieudonne	1	240	\$716	75.8%	+0.48	\$113.99
Berry Bentzinger	1	242	\$694	92.1%	+0.45	\$108.00
Monnie Olheiser	1	487	\$1,283	67.1%	+0.21	\$101.55
Jeffrey Stanislawski	4	263	\$805	9.3%	+0.38	\$99.36

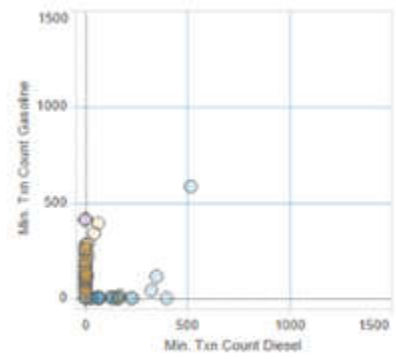
Driver	Vehicles	Gallons	\$ Gross	% Non Reg	Avg Reg Diff	Diff X Gallons
Akiko Thimmes	7	1,588	\$4,808	73.5%	+0.49	\$772.62
Lilly Seabert	3	1,682	\$4,883	76.0%	+0.29	\$486.24
Sebrina Vandyne	4	530	\$1,722	61.7%	+0.54	\$285.55
Rubi Gollman	3	411	\$1,179	100.0%	+0.46	\$189.54
Forest Blackstar	6	446	\$1,235	100.0%	+0.40	\$178.38
Elwanda Puhr	2	419	\$1,214	100.0%	+0.41	\$171.04
Florine Pinkard	1	486	\$1,427	61.4%	+0.34	\$165.28
Henriette Compos	2	399	\$1,346	96.3%	+0.41	\$165.06
Long Halnon	1	530	\$1,484	99.5%	+0.31	\$163.31
Vince Scheuren	1	377	\$1,072	70.8%	+0.41	\$153.89
Shirl Pitcavage	1	329	\$932	97.5%	+0.46	\$152.05
Santana Zisser	1	399	\$1,202	88.1%	+0.33	\$132.10
Jose Pilkington	5	284	\$885	25.1%	+0.43	\$120.55
Bryant Dieudonne	1	240	\$716	75.8%	+0.48	\$113.99
Berry Bentzinger	1	242	\$694	92.1%	+0.45	\$108.00
Monnie Olheiser	1	487	\$1,283	67.1%	+0.21	\$101.55
Jeffrey Stanislawski	4	263	\$805	9.3%	+0.38	\$99.36



Net vs Units

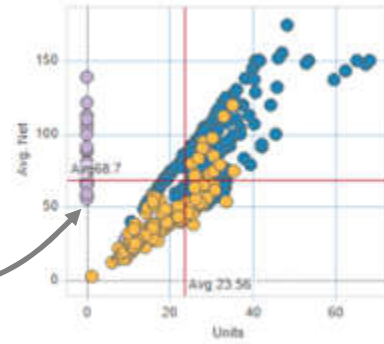


Gas Hist vs Dsl Hist

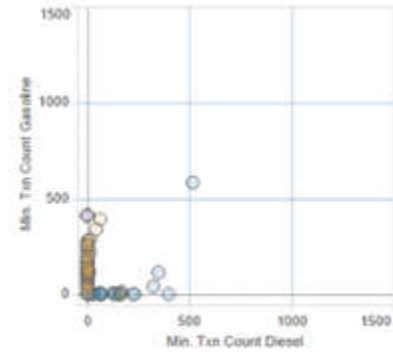


Fuel isn't typically sold in integer units

Net vs Units

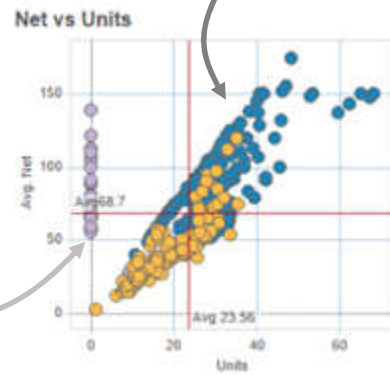


Gas Hist vs Dsl Hist

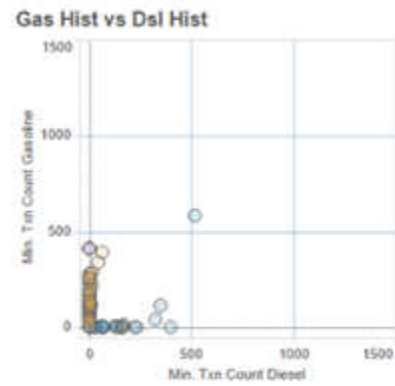




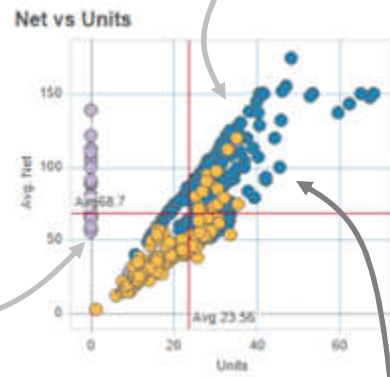
Diesel prices are different than gasoline



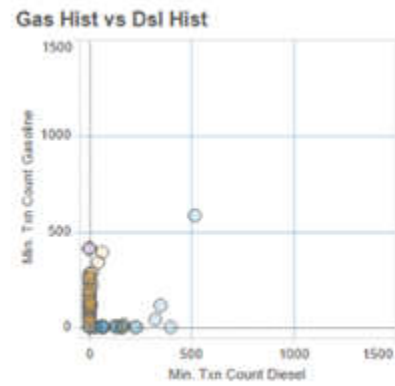
Fuel isn't typically sold in integer units



Diesel prices are different than gasoline

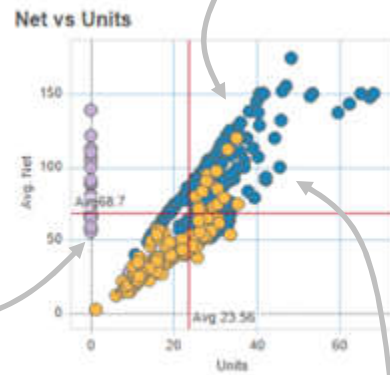


Fuel isn't typically sold in integer units



Diesel volume usually greater than gasoline

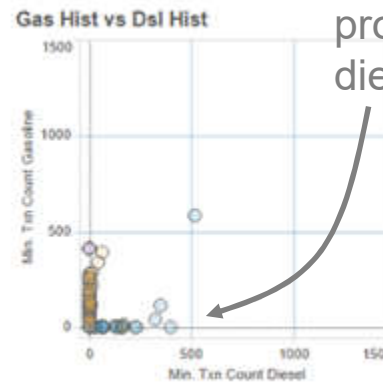
Diesel prices are different than gasoline

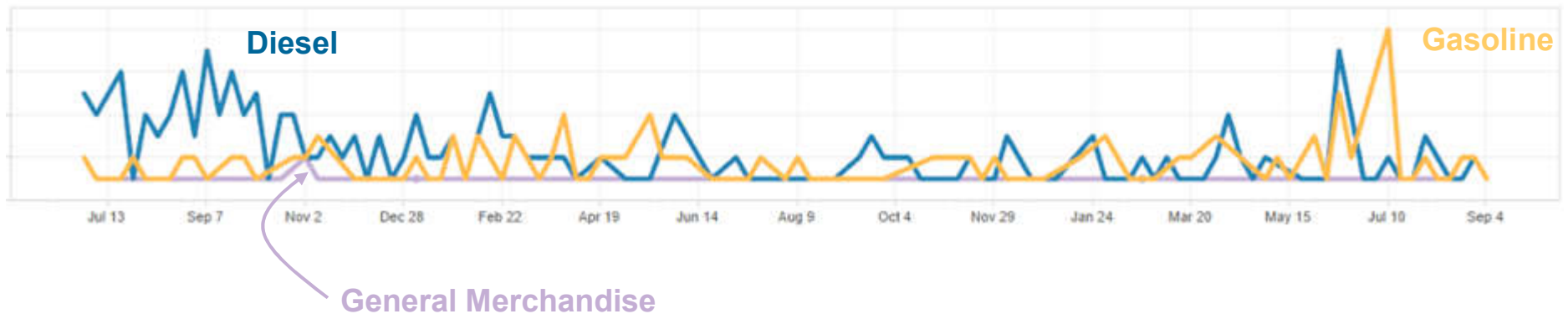


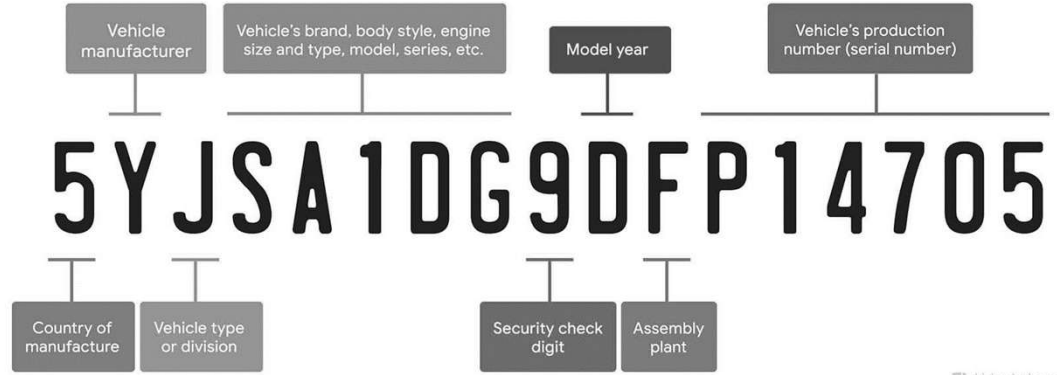
Fuel isn't typically sold in integer units

Diesel volume usually greater than gasoline

If you bought diesel before, you probably bought diesel again

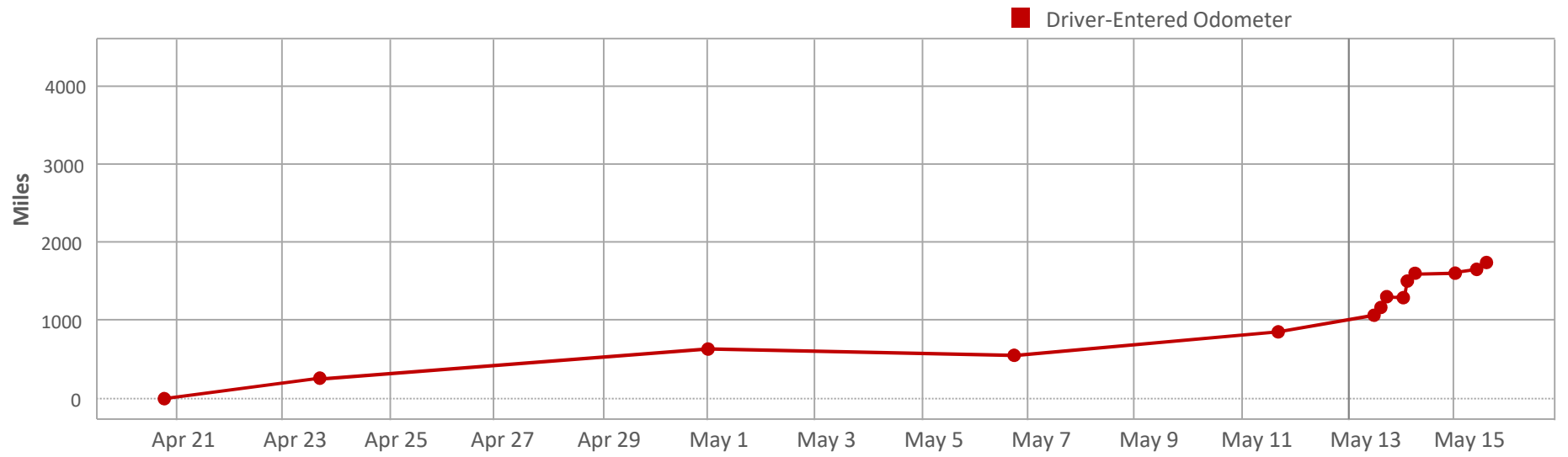


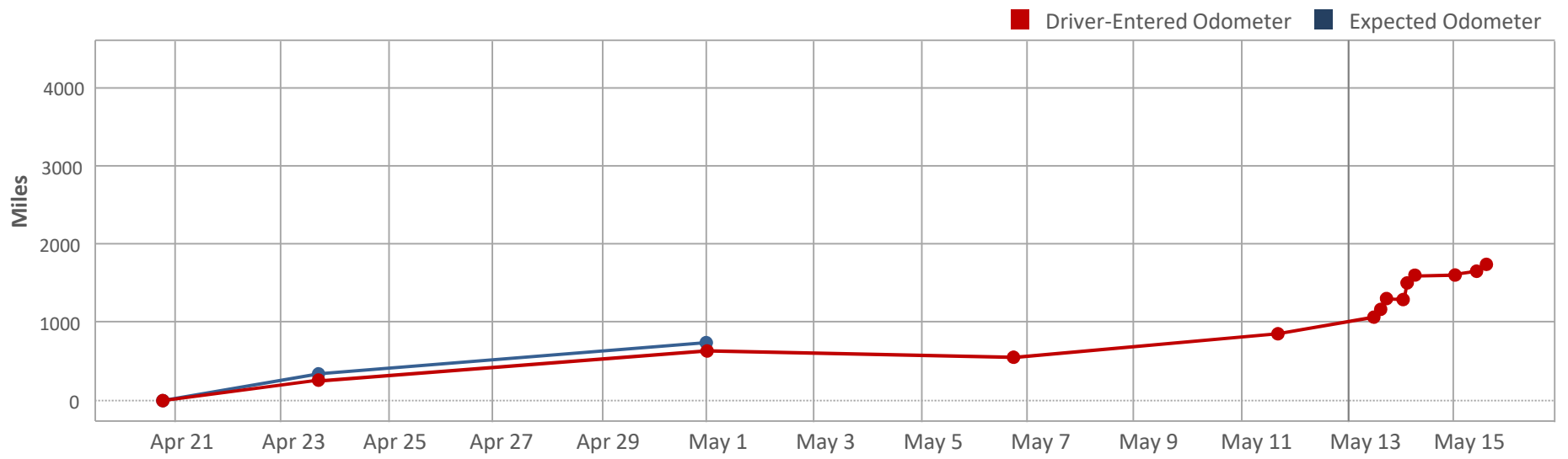




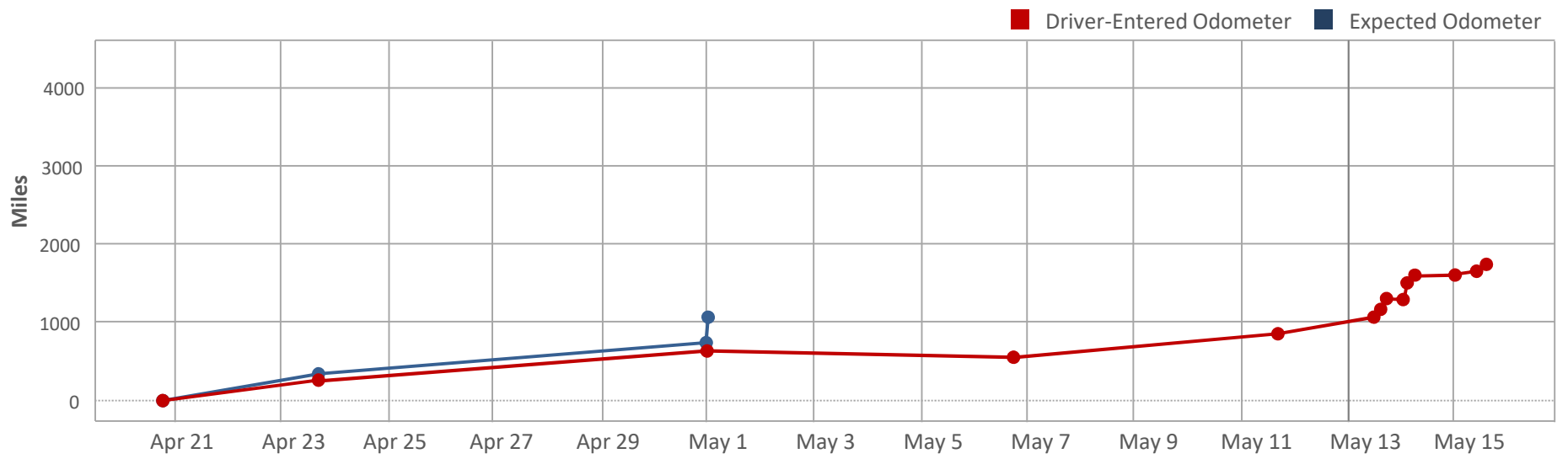
[driving-lessons.org](http://driving-lessons.org)

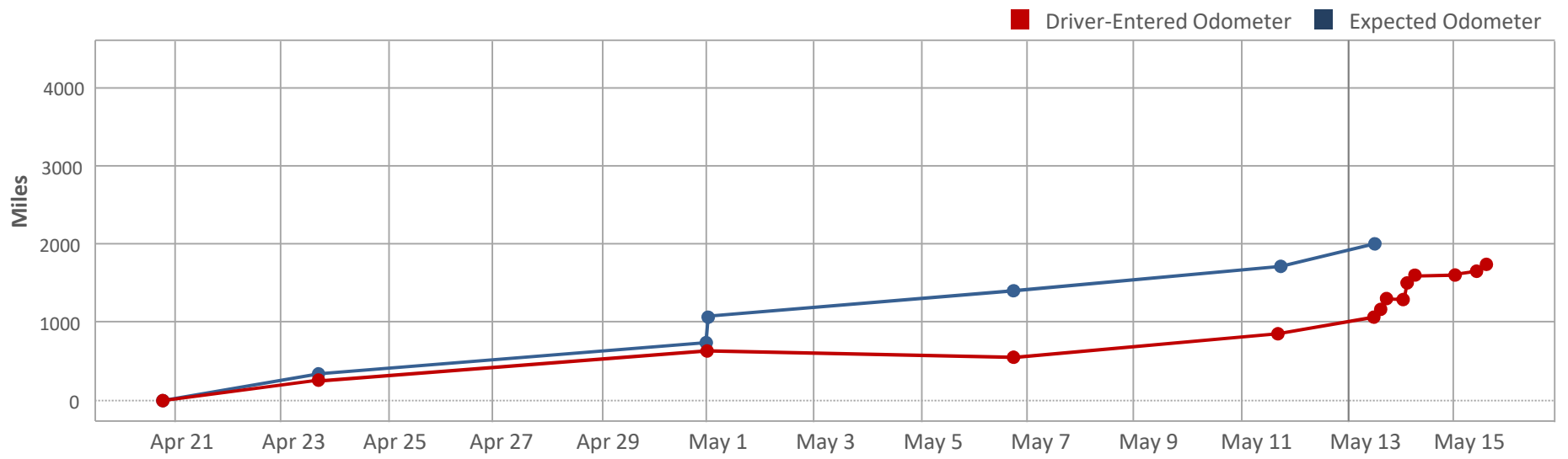


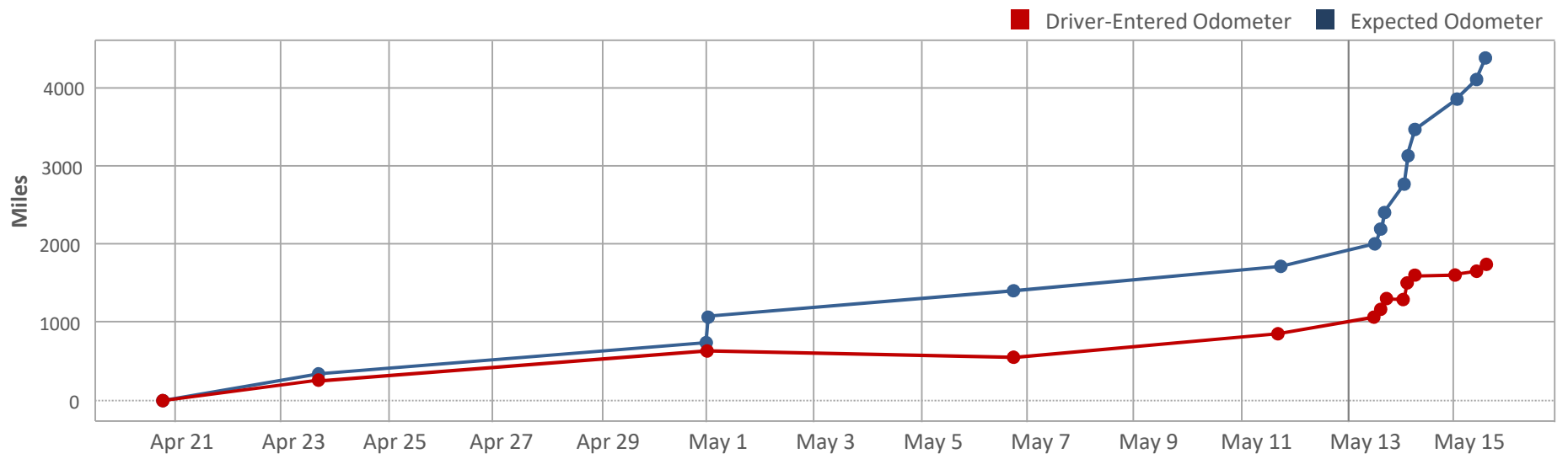




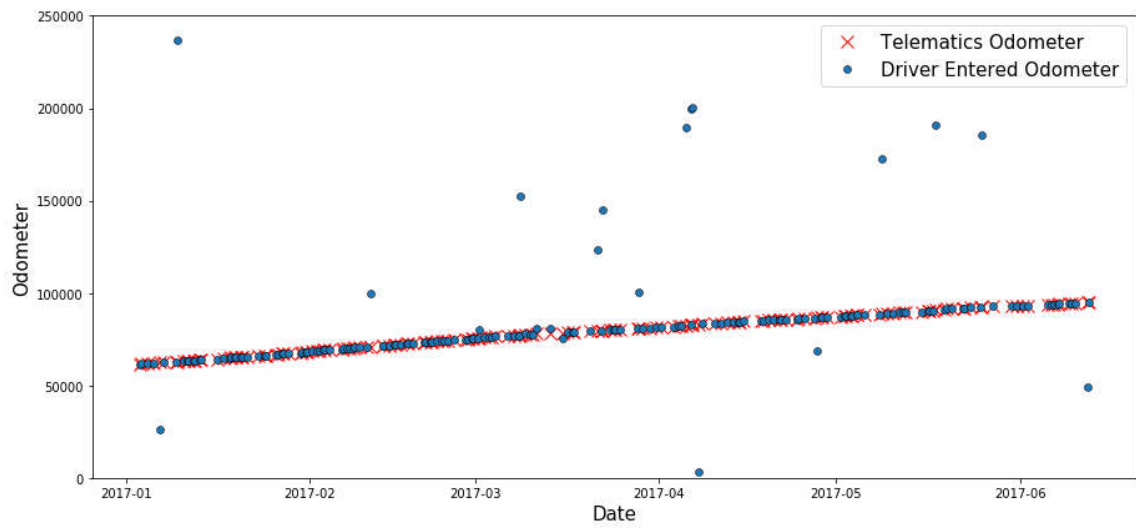


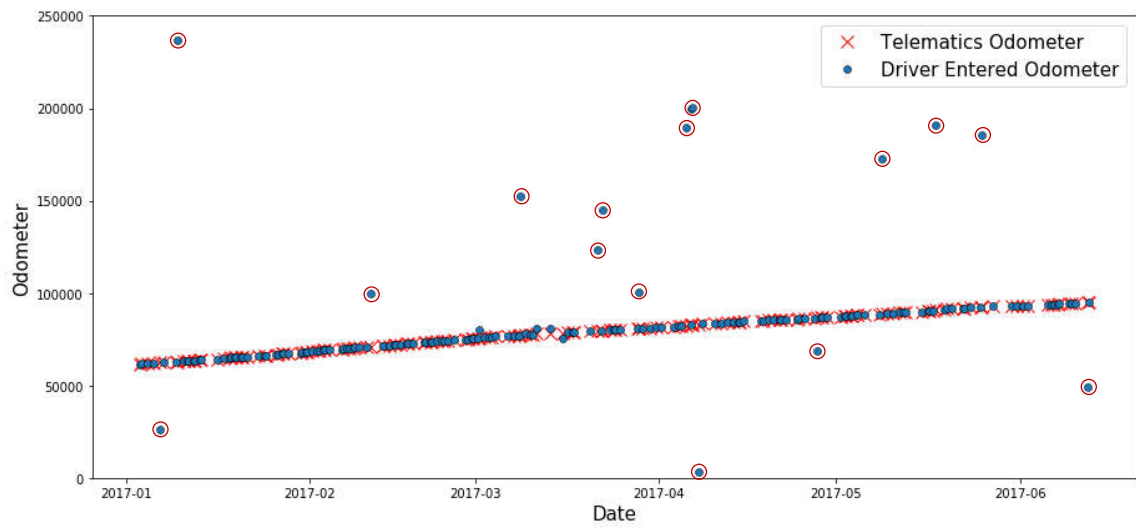


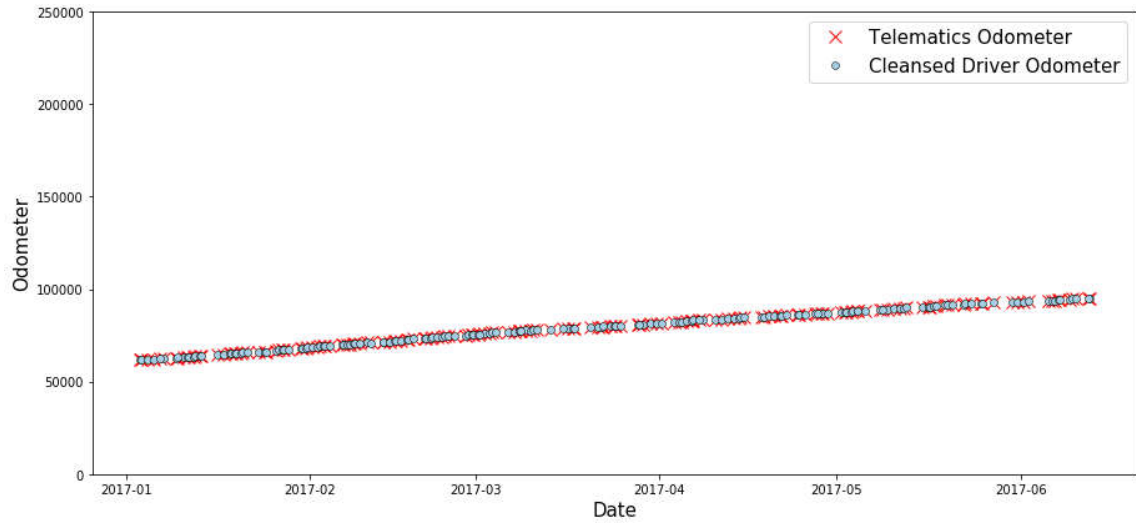


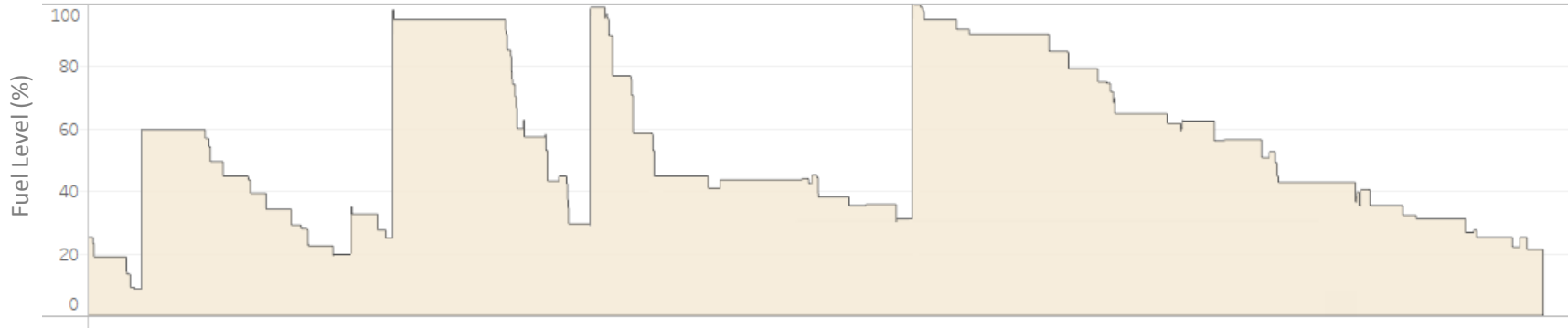




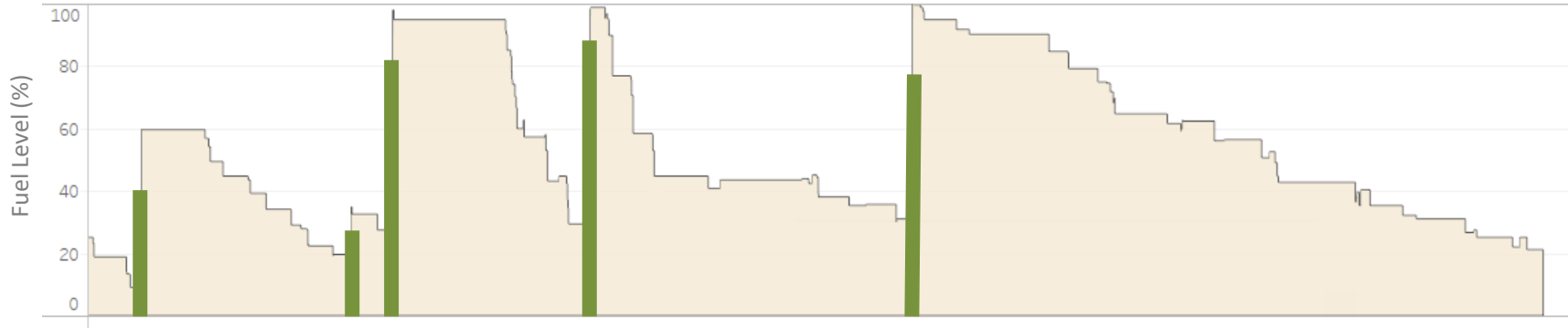


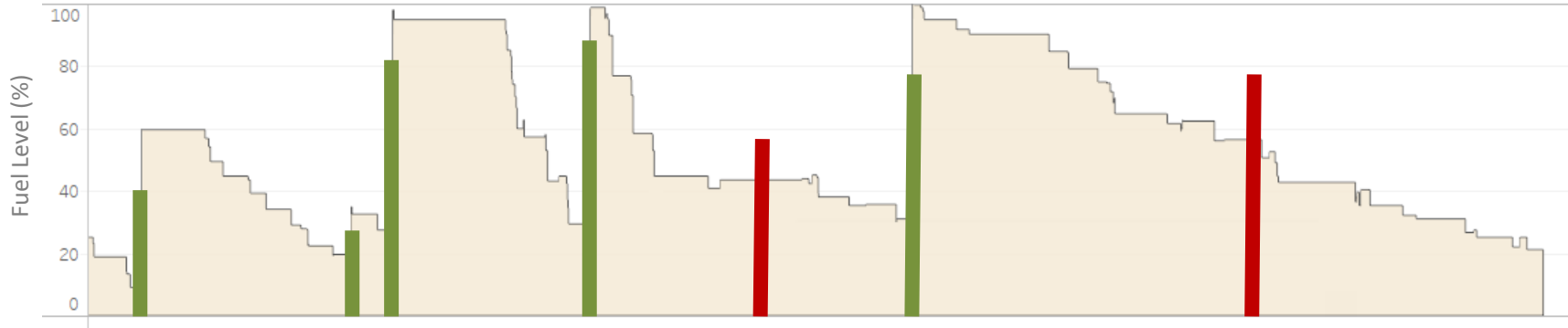




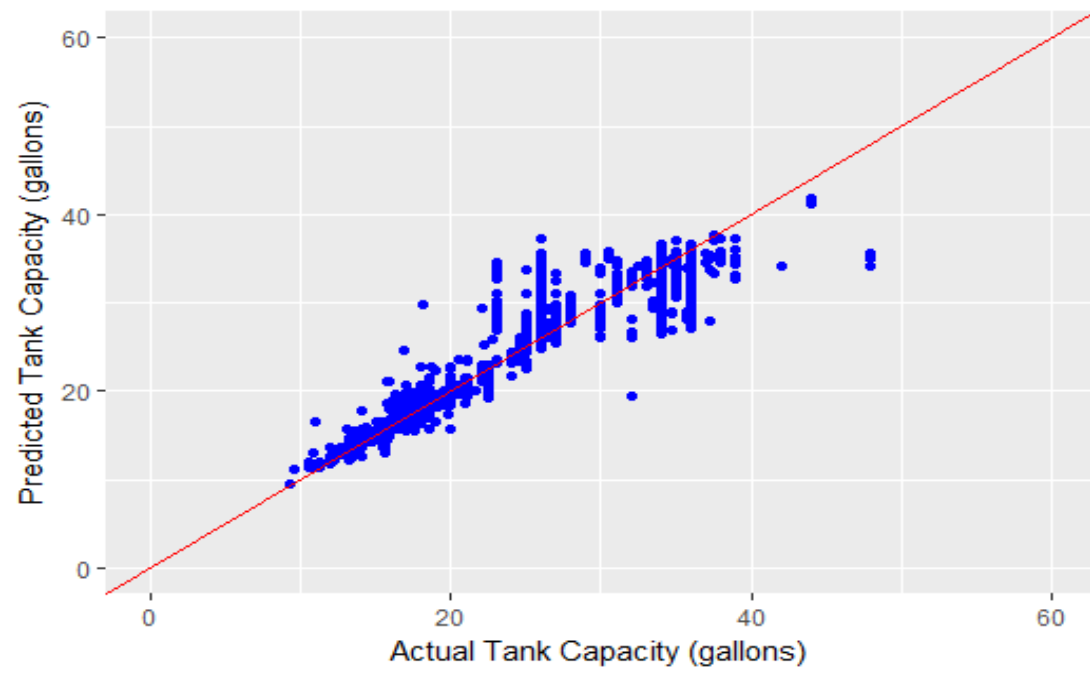


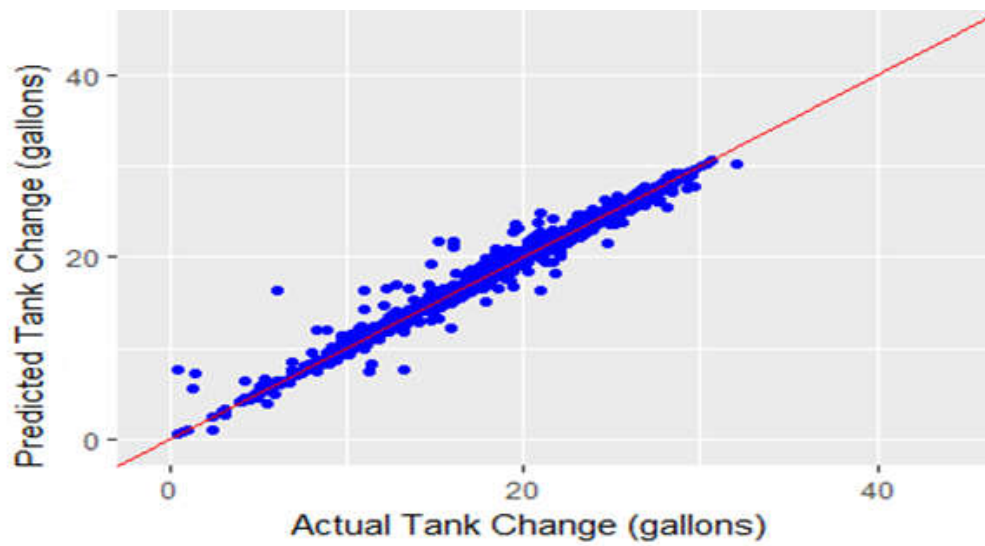










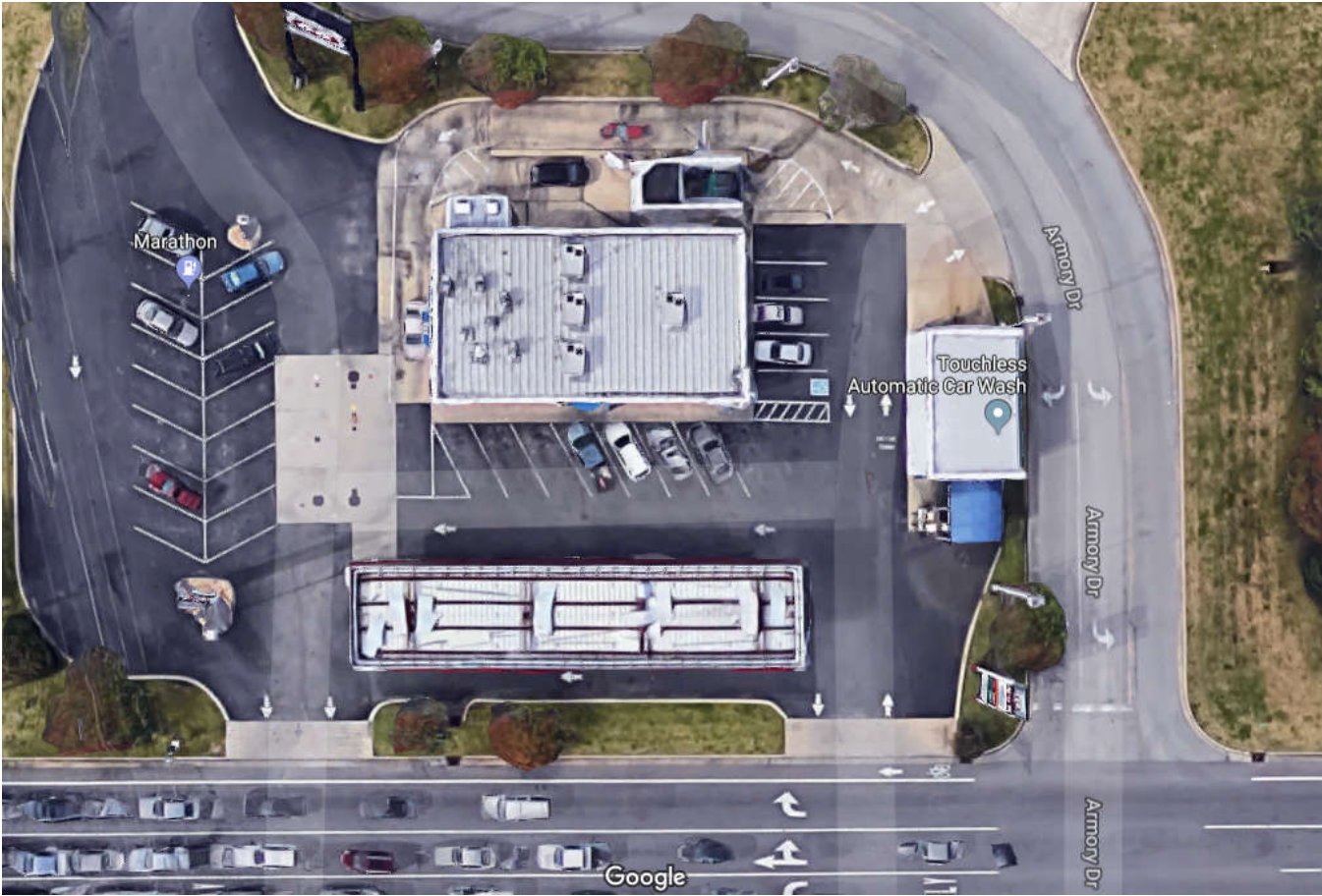


Fueling Location



Vehicle location







Keep going,  
adding more & more data  
to answer new questions

Thank you